

Fig. 6

05808

T = top = oben
B = bottom = unten

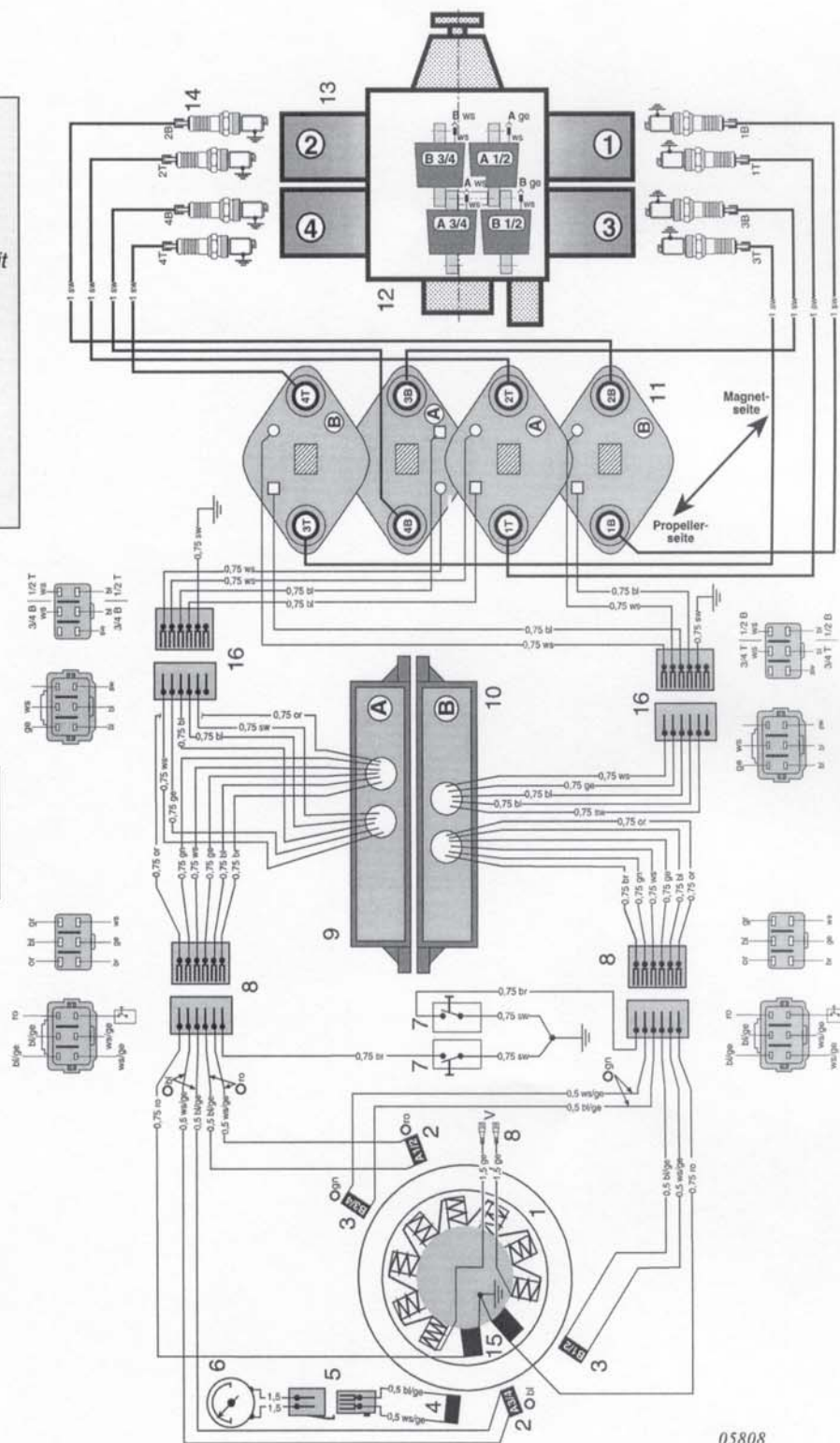
wiring diagram 912 Series

- 1 ignition magneto-generator
- 2 pick-up for ignition circuit "A"
- 3 pick-up for ignition circuit "B"
- 4 pick-up for rev-counter
- 5 plug receptacle 2-pole
- 6 electronic tachometer
- 7 shorting switch for ignition circuit "A" and "B"
- 8 plug receptacle 6-pole
- 9 electronic module for circuit "A"
- 10 electronic module for circuit "B"
- 11 double ignition coil
- 12 engine
- 13 cylinder 1-4
- 14 spark plugs
- 15 charging coils
- 16 plug receptacle 6-pole

V consumer connection
o colour code

**ignition circuit A: 1 u. 2 TOP
3 u. 4 BOT**
**ignition circuit B: 1 u. 2 BOT
3 u. 4 TOP**

bl blue
br brown
ge yellow
gn green
ro red
rs pink
sw black
ws white
or orange



05808

Fig. 7

05809

T = top = oben
B = bottom = unten

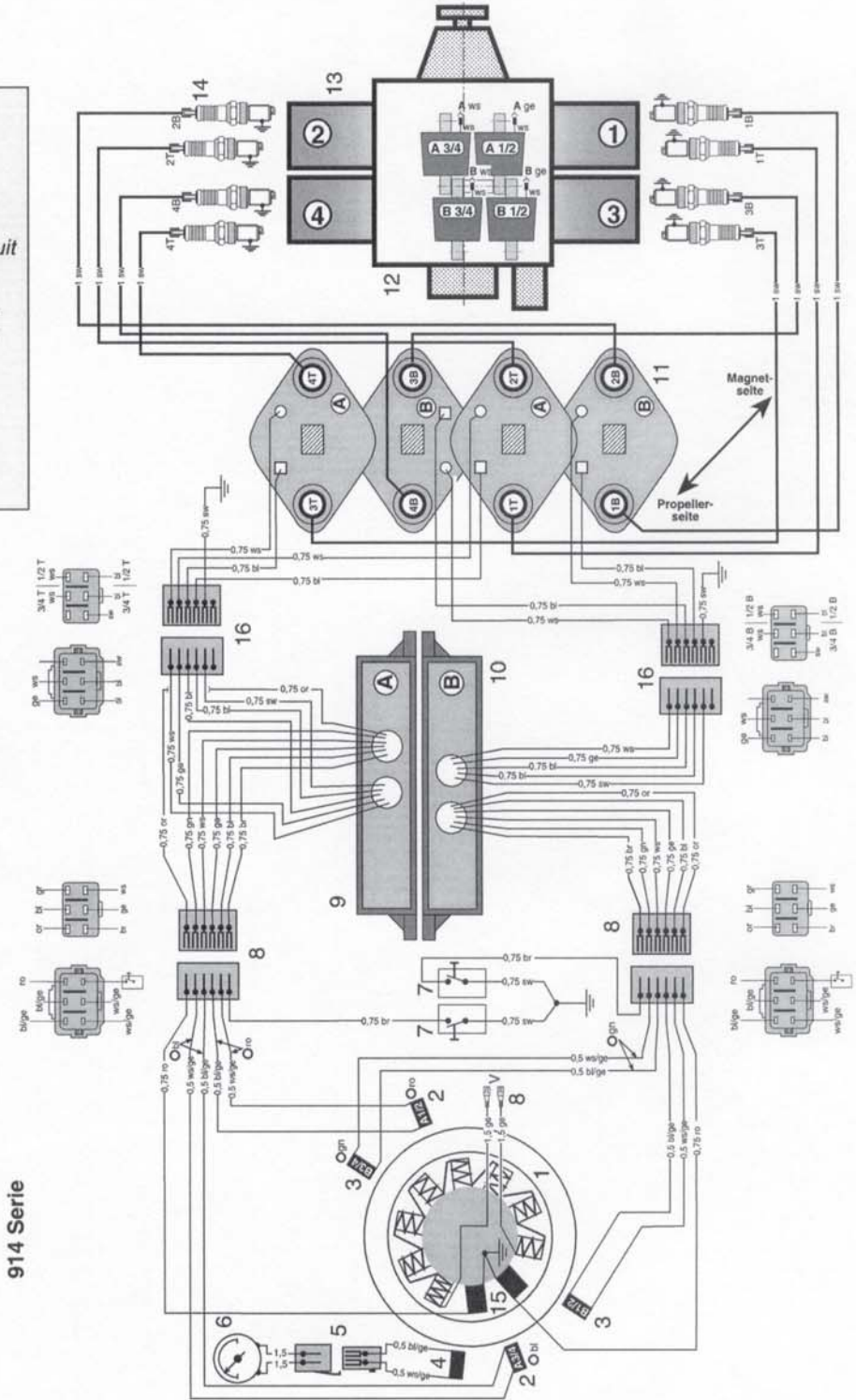
- 1 ignition magneto-generator
- 2 pick-up for ignition circuit A
- 3 pick-up for ignition circuit B
- 4 pick-up for rev-counter
- 5 plug receptacle 2-pole
- 6 electronic tachometer
- 7 shorting switch for ignition circuit "A" and "B"
- 8 plug receptacle 6-pole
- 9 electronic module for circuit "A"
- 10 electronic module for circuit "B"
- 11 double ignition coil
- 12 engine
- 13 cylinder 1-4
- 14 spark plugs
- 15 charging coils
- 16 plug receptacle 6-pole

V consumer connection
o colour code

ignition circuit A: 1 - 4 TOP
ignition circuit B: 1 - 4 BOT

- bl blue
- br brown
- ge yellow
- gn green
- ro red
- rs pink
- sw black
- ws white
- or orange

wiring diagram 914 Series



05809