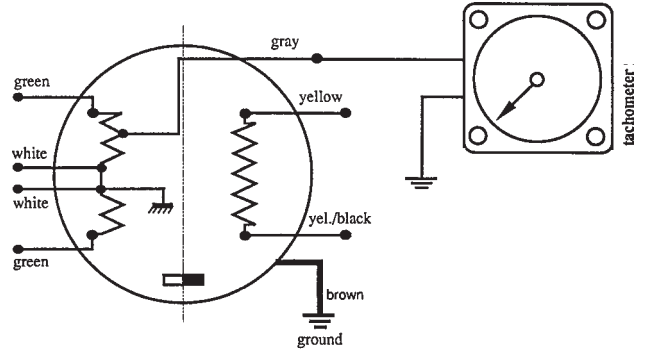
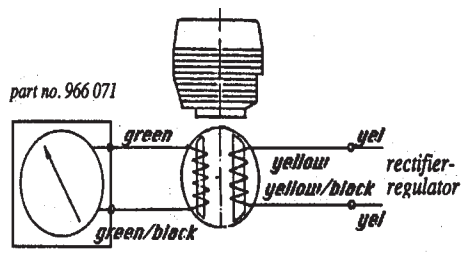
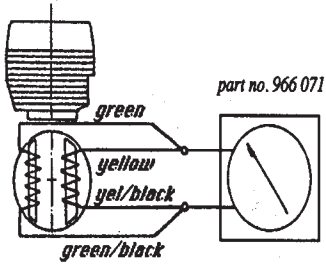


POINT IGNITION

CDI IGNITION

Wiring diagram for tachometer without rectifier-regulator

Wiring diagram for tachometer in conjunction with rectifier-regulator and battery



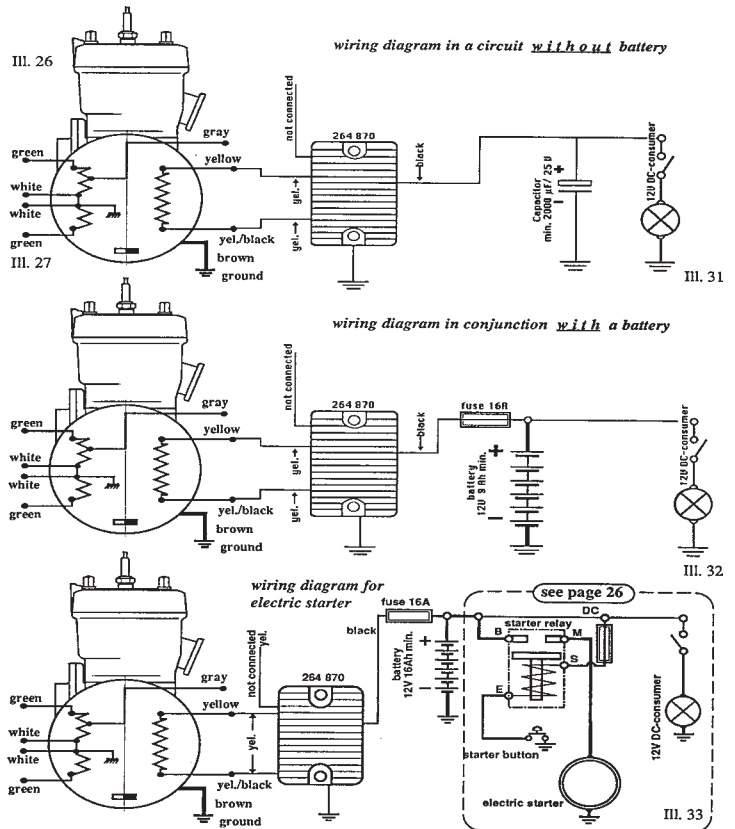
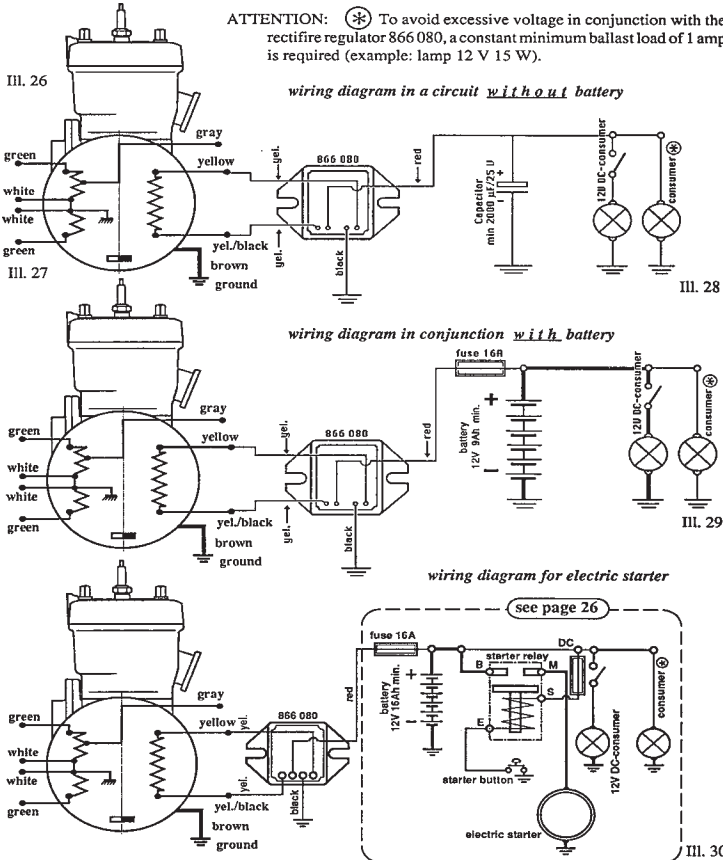
REGULATOR RECTIFIER 866 080

REGULATOR RECTIFIER 264 870

1 AMP DRAW REQUIRED

NO LOAD REQUIRED

ATTENTION: ⚠ To avoid excessive voltage in conjunction with the rectifier regulator 866 080, a constant minimum ballast load of 1 amp is required (example: lamp 12 V 15 W).

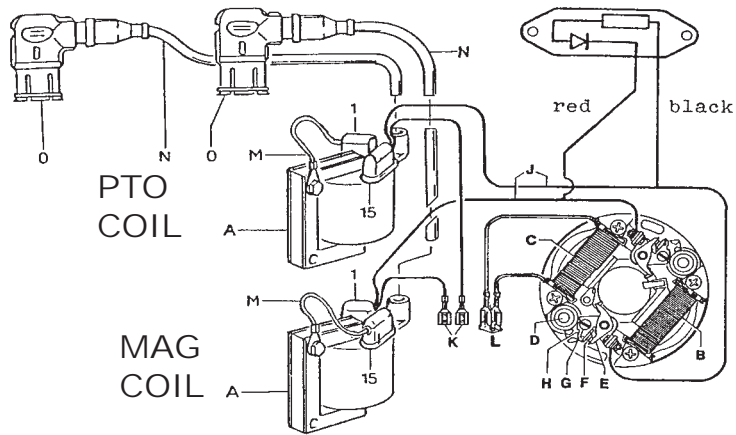


# POINT IGNITION

# WIRING

RTX

- A. ignition coils
- B. generator coil 30W
- C. lighting coil 110W
- D. condenser
- E. contact breaker lever
- F. breaker contacts
- G. fixing screw
- H. adjusting groove
- J. generator cables
- K. shorting cables
- L. lighting cables
- M. mass cables
- N. ignition cables
- O. spark plug protectors



## IGNITION DAMPING BOX

866 572

### CONNECTION:

\*Red cable to magneto side ignition coil, connection 1

\*Black cable to pto side ignition coil, connection 15

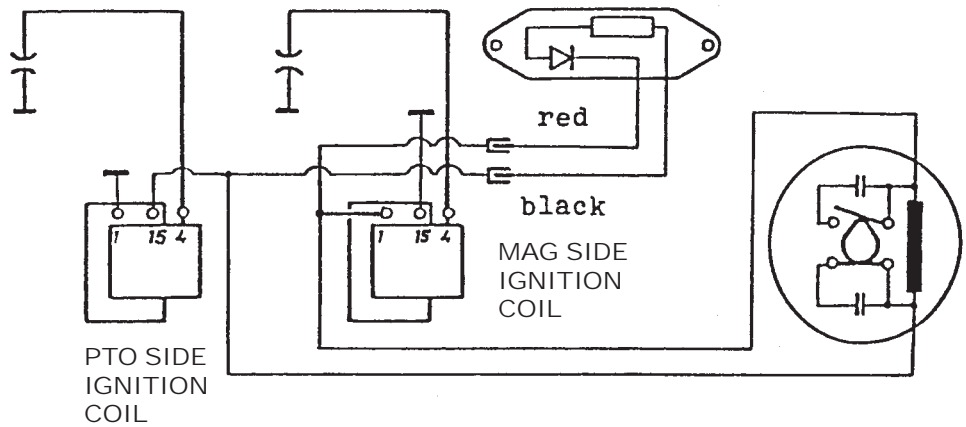
### CHECKING:

\*Precaution check: connect damping box w/ reverse polarity. There must be no spark on both plugs when cranking engine.

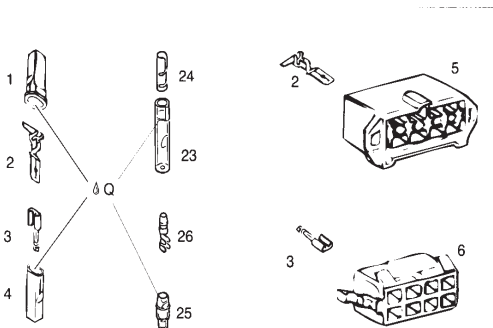
If there is still a spark, the damping box is defective.

\*Trouble with no spark: disconnect damping box. If there is now a spark

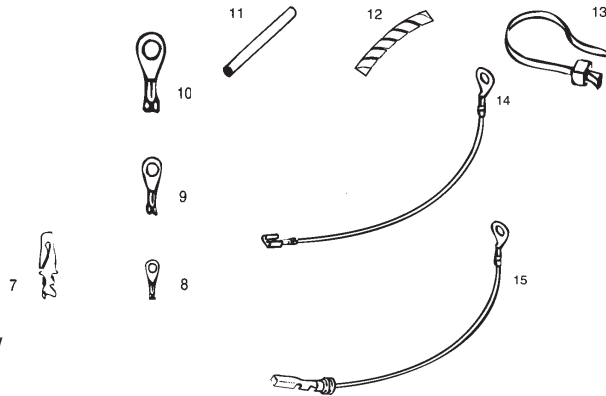
- a) damping box is either hooked up in reverse or defective
- b) pole ring break away gap is out of tolerance (defective woodruff key or wrong armature assy)



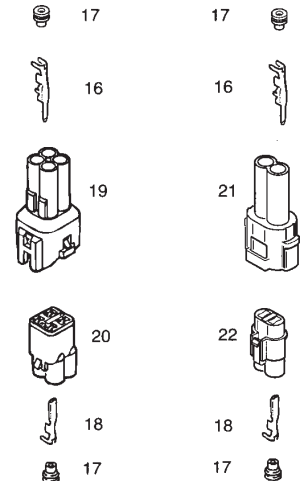
## WIRE CONNECTORS/2-STROKES



- |    |         |                          |
|----|---------|--------------------------|
| 1  | 960 970 | Connector sheath, yellow |
| 2  | 866 300 | Faston Connector 6.3x.8  |
| 3  | 864 010 | Faston Connector 6.3x.8  |
| 4  | 960 719 | Connector sheath         |
| 5  | 866 025 | Connector housing        |
| 6  | 866 010 | Connector housing        |
| 7  | 866 305 | Faston connector         |
| 8  | 965 706 | Cable shoe M3            |
| 9  | 965 700 | Cable shoe M4            |
| 10 | 964 055 | Cable terminal M5        |
| 11 | 860 621 | Shrink hose 40 mm        |
| 12 | 966 060 | Spiral hose, 6.5x8.5x.6  |
| 13 | 866 710 | Clamp 142x2.5mm          |
| 14 | 865 992 | Mass cable assy          |



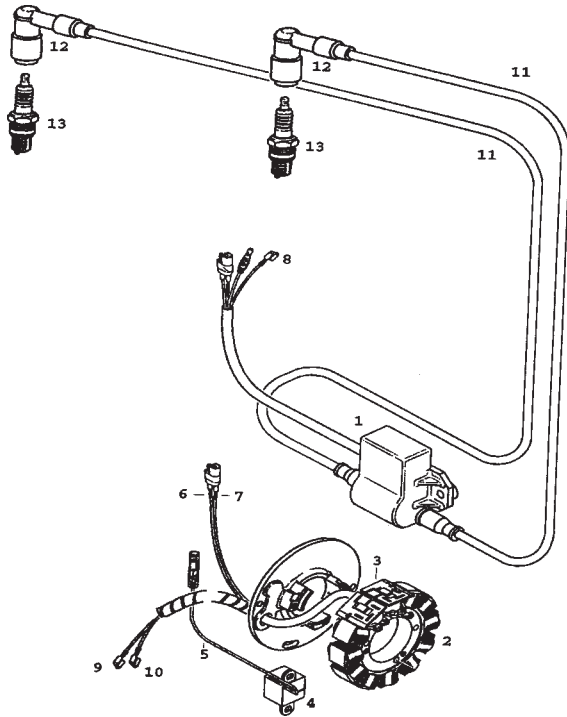
- |    |                                   |
|----|-----------------------------------|
| 15 | Mass cable assy                   |
| 16 | 265 210 Flat pin terminal         |
| 17 | 260 130 Cable grommet             |
| 18 | 265 275 Faston connector          |
| 19 | 265 262 Connector housing, 4 pole |
| 20 | 265 260 Connector housing, 4 pole |
| 21 | 265 200 Connector housing, 2 pole |
| 22 | 265 205 Connector housing, 2 pole |
| 23 | 964 072 Insulation sheath         |
| 24 | 964 067 Faston connector 3.96     |



FOR 912/912S/914 CONNECTORS SEE PAGE 74



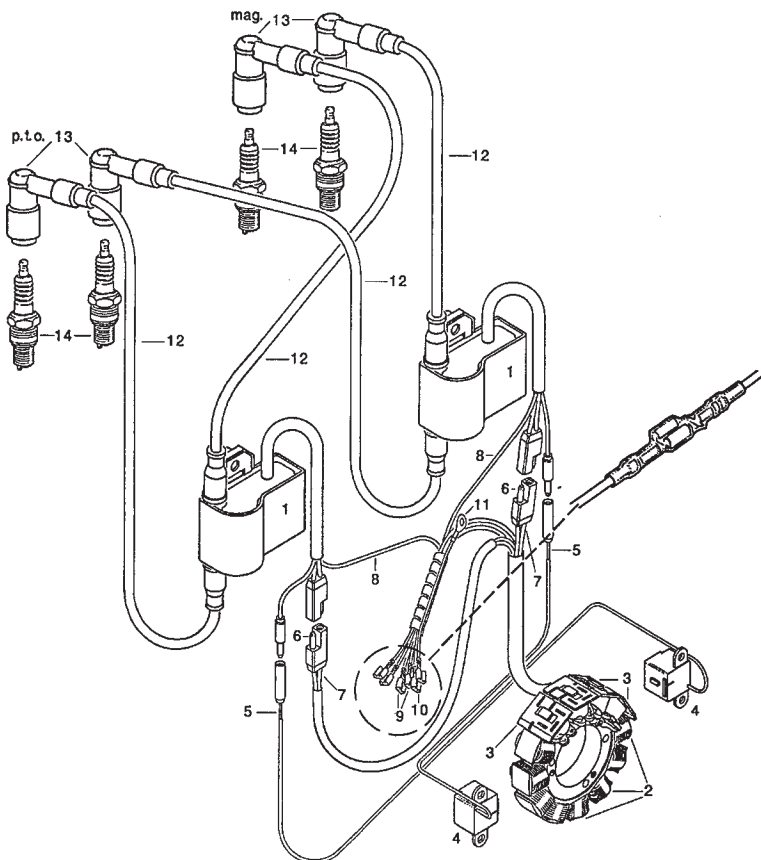
SINGLE CDI



- 1 electronic box
- 2 ten lighting coils
- 3 two charging coils
- 4 pickup
- 5 trigger cable, red
- 6 charging cable, green
- 7 charging cable, white
- 8 shorting cables, black/yellow
- 9 lighting cables, yellow-yellow/black
- 10 mass cable, brown
- 11 ignition cables
- 12 spark plug connectors
- 13 spark plugs
- 14 shrink tube

AFTER INSTALLING, ALL CONNECTIONS MUST BE PROTECTED WITH SHRINK TUBE SUPPLIED

DUAL CDI



- 1 electronic box
- 2 eight lighting coils
- 3 four charging coils
- 4 pickup
- 5 trigger cable, red
- 6 charging cable, green
- 7 charging cable, white
- 8 shorting cables, black/yellow
- 9 lighting cables, yellow-yellow/black
- 10 rev counter cable, gray
- 11 mass cable, brown
- 12 ignition cables
- 13 spark plug connectors
- 14 spark plugs
- 15 shrink tube

AFTER INSTALLING, ALL CONNECTIONS MUST BE PROTECTED WITH SHRINK TUBE SUPPLIED