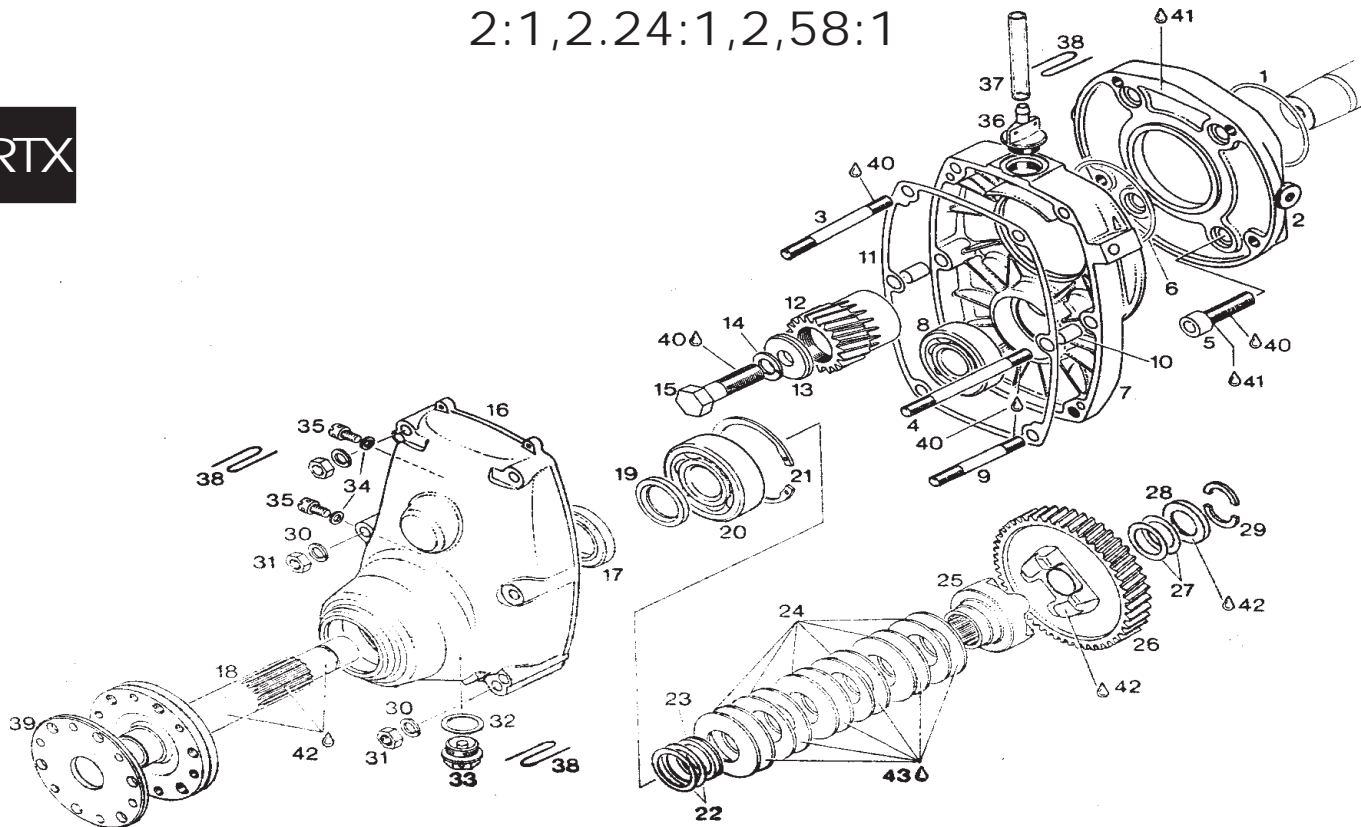


GEAR DRIVES 377/447/503 "A" GEAR BOX

2:1,2.24:1,2,58:1

RTX



Ill No.	Part No.	Description	Qty
1	850 430	O-ring 75-2.5	1
2	910 505	Adaptor plate	1
3	841 901	Stud M8x91.5 (8NM)	2
4	841 911	Stud M8x103.5 (8NM)	2
5	841 820	Allen bolt, M10x45 (40NM)	4
6	850 360	O-ring 67.95-2.62	1
7	910 911	Gear Housing	1
8	932 091	Ball Bearing	1
9	841 881	Stud M8x75 (8NM)	2
10	929 670	Dowel 10x13	2
11	930 533	Gasket	1
12	834 020	Not available alone, use 886 200	1
12	834 022	Not available alone, use 886 202	1
12	834 024	Not available alone, use 886 204	1
13	827 785	Washer	1
14	945 756	Lock washer VHV 13	1
15	841 656	Hex Screw (60NM)	1
16	910 371	Gear Cover	1
17	850 055	Oil Seal	1
18	837 029	Prop shaft	1
19	827 850	Distance Ring	1
20	932 820	Ball Bearing	1
21	445 070	Snap Ring 62x2	1
22	944 470	Shim 25.5/34/.2	As Req.
	944 471	Shim 25.5/34/.3	As Req.
	944 472	Shim 25.5/34/.5	As Req.
	944 473	Shim 25.5/34/1	As Req.
	944 474	Shim 25.5/34/1	As Req.
23	847 620	Distance Ring	1

Ill No.	Part No.	Description	Qty
24	939 020	Disk spring B50	12
25	958 770	Dog Hub	1
26	834 100	Not available alone, use 886 200	1
	834 102	Not available alone, use 886 202	1
	834 104	Not available alone, use 886 204	1
27	944 469	Thrust washer	2
28	827 840	Angular ring	1
29	827 860	Ring half	2
30	945 752	Lock washer A8	6
31	242 206	Hex nut M8 (22NM)	6
32	552 280	Gasket ring	1
33	840 270	Magnetic plug	1
34	830 890	Gasket ring	2
35	841 781	Cap stan screw M6x10	2
36	941 115	Air vent screw, replacement	1
37	974 532	Vent line 70MM	1
38	SW032	Safety wire	As Req.
39	827 830	Prop Washer	1
40	LT222	Loctite 222, violet	As Req.
41	LT680	Loctite 680, green	As Req.
42	PSAS	Anti-seize	As Req.
43		BP Energrease	As Req.

ENGINES REQUIRING ADAPTOR PLATE:

277: ALL

377: UP TO AND INCLUDING 3850528

447: UP TO AND INCLUDING 3793687

503: UP TO AND INCLUDING 3786749

532: UP TO AND INCLUDING 3799004

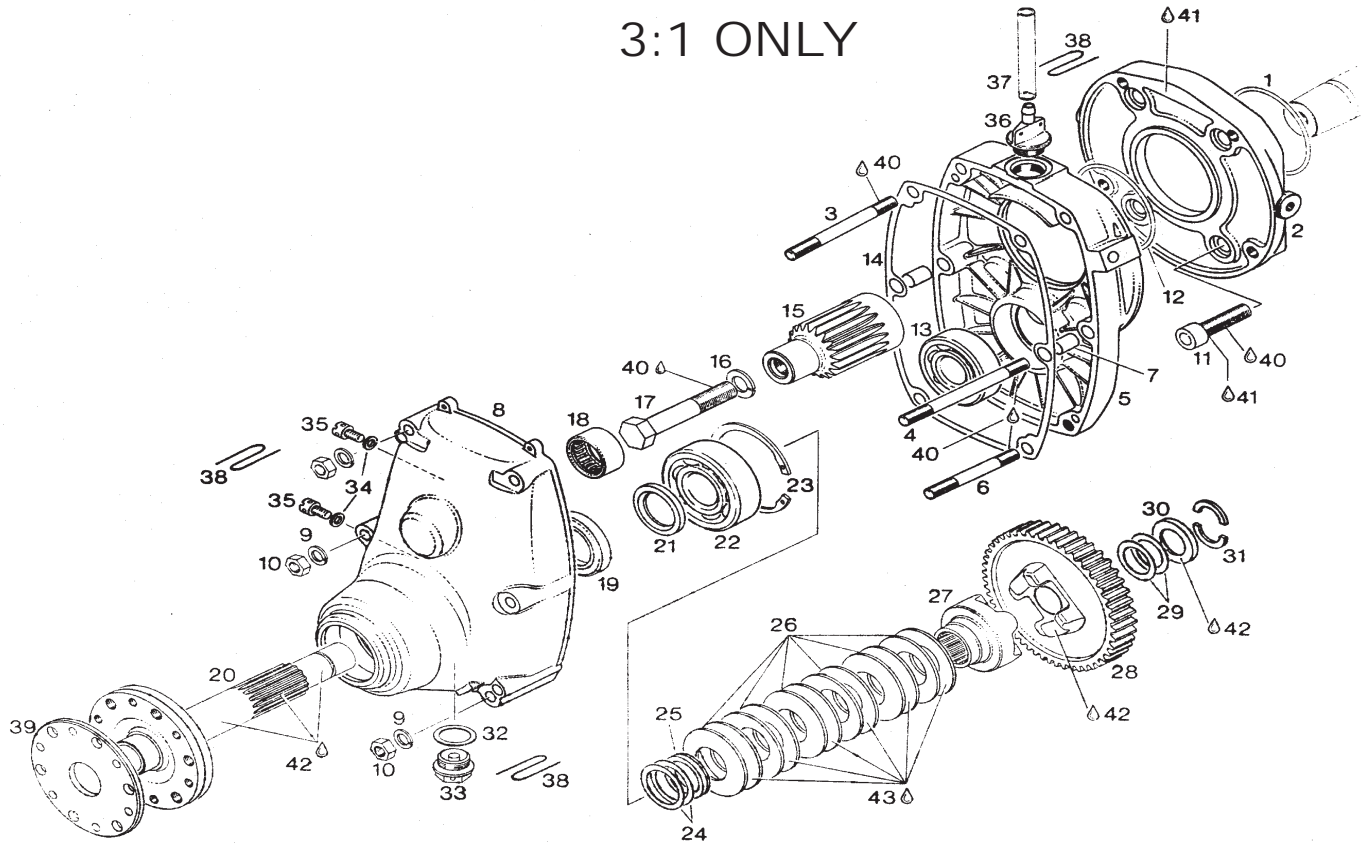
Lockwood Aviation Supply www.lockwood-aviation.com e-mail: info@lockwood.aero

Order Line 1-800-LA-ROTAX Info Line 1-863-655-5100 Fax 1-863-655-6225

377/447 "A" GEAR BOX 3:1 ONLY

GEAR DRIVES

RTX



Ill No.	Part No.	Description	Qty
1	850 430	O-ring 75-2.5	1
2-10	996 191	Gear housing kit with dowels	1
2	910 505	Adaptor plate	1
3	841 901	Stud M8x91.5 (8NM)	2
4	841 911	Stud M8x103.5 (8NM)	2
5		Not available as spare part	
6	841 881	Stud 8Mx75 (8NM)	2
7	929 670	Dowel 10x13	2
8		Not available as spare part	
9	945 752	Lock washer A8	6
10	242 206	Hex nut M8 (22NM)	6
11	841 820	Allen screw M10x45 (40NM)	4
12	850 360	O-ring 67.95-2.62	1
13	932 091	Ball bearing	1
14	930 533	Gasket	1
15	834 025	Drive gear 18T, 3.0:1, use 886 2051	1
16	945 766	Lock washer VHV 13	1
17	941 051	Hex screw (60NM)	1
18	832 300	Needle bearing 25x32x16	1
19	850 055	Oil seal	1
20	837 029	Prop shaft	1
21	827 850	Distance ring	1
22	932 820	Ball bearing	1
23	445 070	Snap ring 62x2	1
24	944 470	Shim 25.5/34/.2	As Req.
	944 471	Shim 25.5/34/.3	As Req.
	944 472	Shim 25.5/34/.5	As Req.
	944 473	Shim 25.5/34/1	As Req.
	944 474	Shim 25.5/34/1	As Req.

Ill No.	Part No.	Description	Qty
25	847 620	Distance ring	1
26	939 020	Disk spring B50	12
27	958 770	Dog hub	1
28	834 105	Not available alone, use 886 205	1
29	944 469	Thrust washer	2
30	827 840	Angular ring	1
31	827 860	Ring half	2
32	552 280	Gasket ring	1
33	840 270	Magnetic plug	1
34	830 890	Gasket ring	2
35	841 781	Cap stan screw M6x10	2
36	941 110	Air vent screw	1
37	974 532	Vent line 70MM	1
38	SW032	Safety wire	As Req.
39	827 830	Prop washer	1
40	LT222	Loctite 222, violet	As Req.
41	LT609	Loctite 609, green	As Req.
42	PSAS	Anti-seize	As Req.
43		BP Energrease	As Req.

ENGINES REQUIRING ADAPTOR PLATE:

277: ALL

377: UP TO AND INCLUDING 3850528

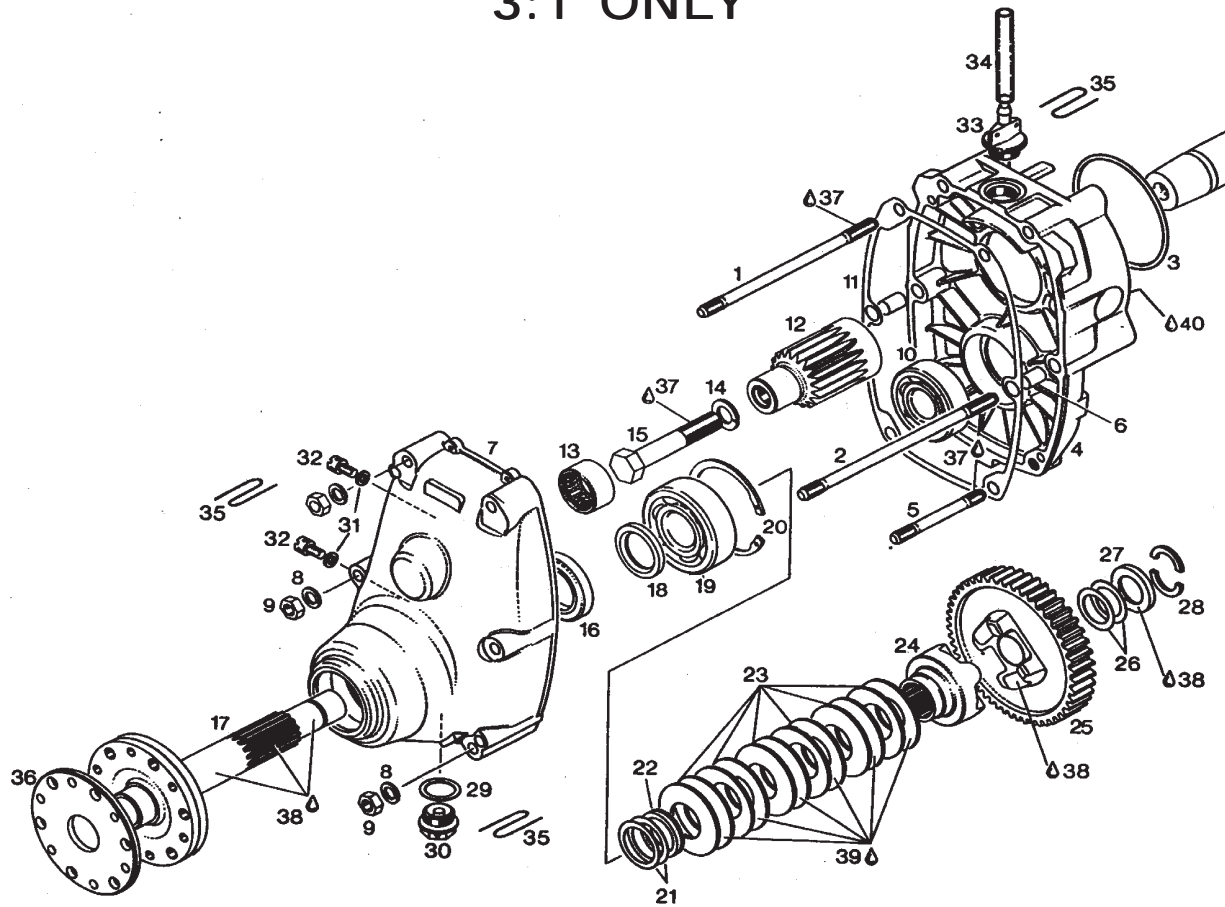
447: UP TO AND INCLUDING 3793687

503: UP TO AND INCLUDING 3786749

532: UP TO AND INCLUDING 3799004

377/447 "B" GEAR BOX 3:1 ONLY

RTX



Ill No.	Part No.	Description	Qty
1	940 646	Stud M8x123, 8NM	2
2	940 766	Stud M8x140, 8NM	2
3	850 430	O-ring 75-2.5	1
4		Not available as a spare part	
5	841 881	Stud M8x75, 8NM	2
6	929 670	Dowel 10x13	3
7		Not available as a spare part	
8	945 752	Lock washer A8	6
9	242 206	Hex nut M8, 22NM	6
10	932 091	Ball bearing	1
11	930 536	Gasket	1
12	834 025	Drive gear 18T, 3.0:1, use 886 2051	1
13	832 300	Needle bearing	1
14	945 766	Lock washer VHV 13	1
15		Hex screw 1/2-20ountx50, 60NM	1
16	850 055	Oil seal	1
17	837 029	Prop shaft	1
18	827 850	Distance ring	1
19	932 820	Ball bearing	1
20	445 070	Snap ring	1
21	944 470	Shim 25.5/34/.2	As Req.
	944 471	Shim 25.5/34/.3	As Req.
	944 472	Shim 25.5/34/.5	As Req.
	944 473	Shim 25.5/34/1	As Req.
	944 474	Shim 25.5/34/1	As Req.

Ill No.	Part No.	Description	Qty
22	847 620	Distance ring	1
23	939 020	Disk spring B50	12
24	958 770	Dog hub	1
25	834 105	Not available alone, use 886 205	1
26	944 469	Thrust washer	2
27	827 840	Angular ring	1
28	827 860	Ring half	2
29	552 280	Gasket ring	1
30	840 270	Magnetic plug	1
31	830 890	Gasket ring	2
32	841 781	Cap stan screw M6x10	2
33	941 110	NLA use 941 115	1
34	974 532	Vent line 70MM	1
35	SW032	Safety wire	As Req.
36	827 830	Prop washer	1
37	LT222	Loctite 222, violet	As Req.
38	PSAS	Anti-seize	As Req.
39		BP Energrease	As Req.
40	LT680	Loctite 680, green	As Req.

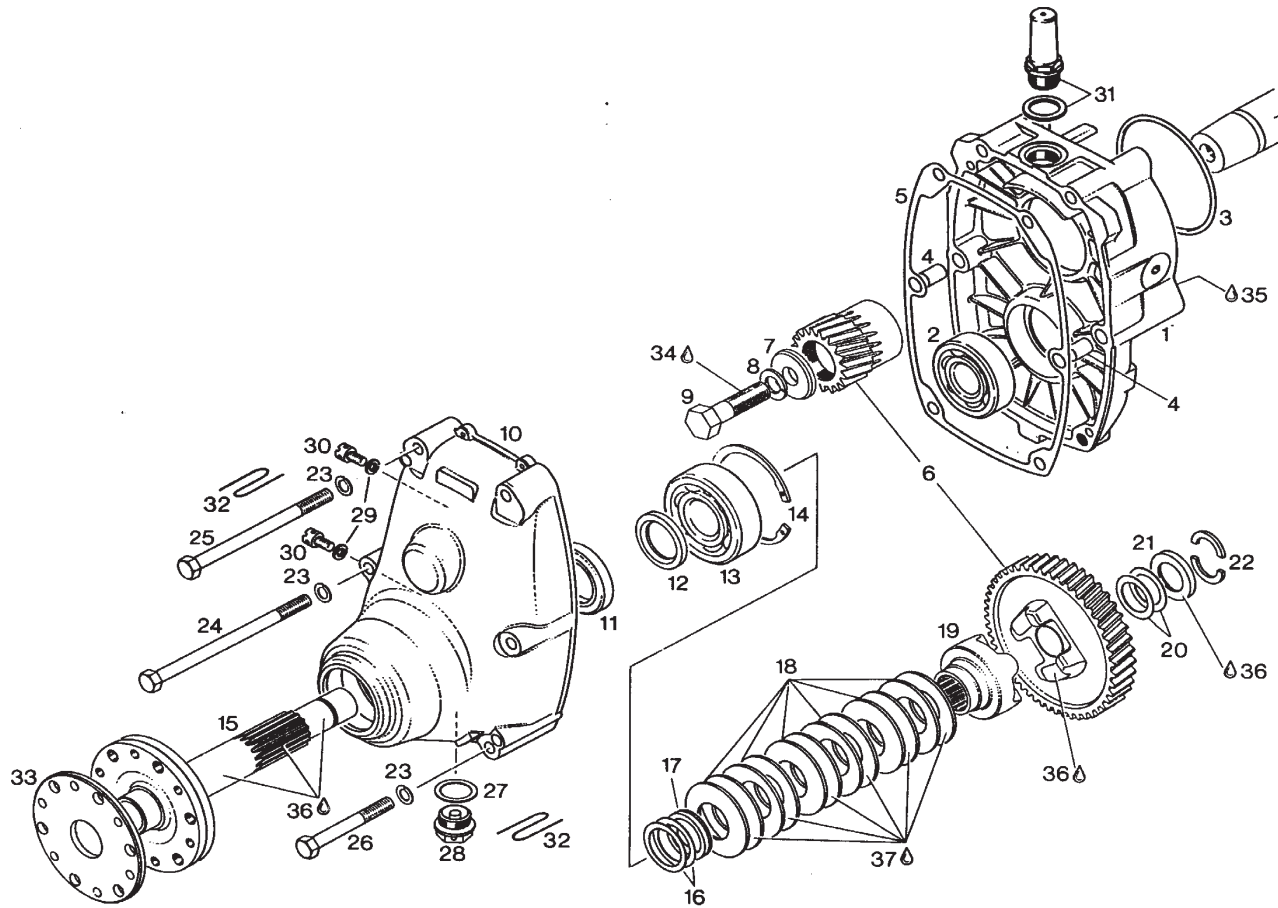
Lockwood Aviation Supply www.lockwood-aviation.com e-mail: info@lockwood.aero

Order Line 1-800-LA-ROTAX Info Line 1-863-655-5100 Fax 1-863-655-6225

"B" TYPE GEAR DRIVE WITHOUT INTERNAL MOUNT BOLTS

GEAR DRIVES

RTX

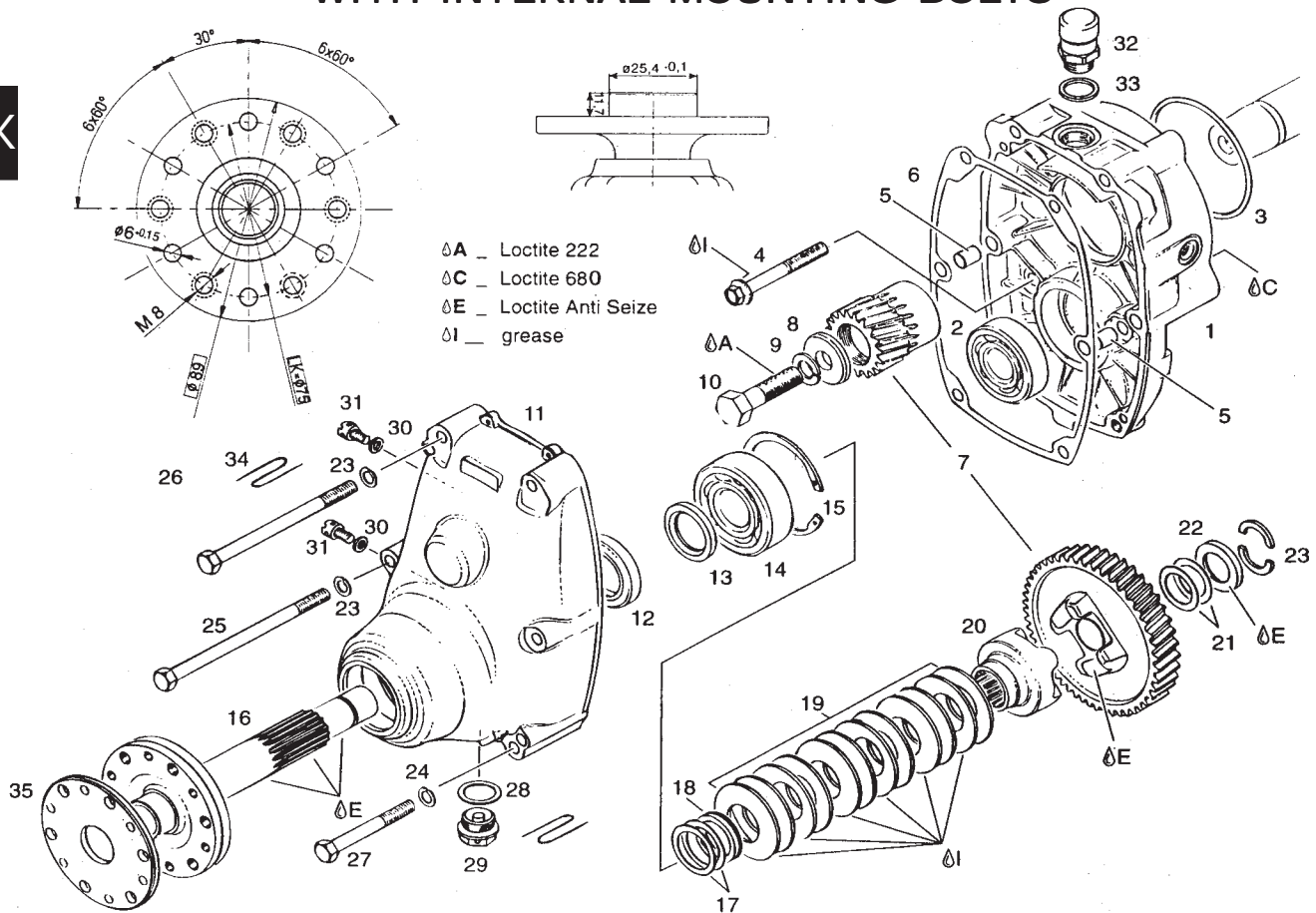


Ill No.	Part#	Description	Qty
1	911 476	Gear housing	1
2	932 091	Ball bearing	1
3	850 430	O-ring	1
4	929 670	Dowel 10x13	2
5	930 536	Gasket	1
6	886 200	Gear set, 2.58:1	1
6	886 202	Gear set, 2.24:1	1
6	886 204	Gear set, 2.00:1	1
7	827 785	Washer	1
8	945 766	Lock washer VHV 13	1
9	841 656	Hex screw (60NM)	1
10	910 372	Gear cover	1
11	850 055	Oil seal	1
12	827 850	Distance ring	1
13	932 820	Ball bearing	1
14	445 070	Snap ring 62x2	1
15	837 029	Prop shaft	1
16	944 470	Shim 25.5/34/.2	As Req.
16	944 471	Shim 25.5/34/.3	As Req.
16	944 472	Shim 25.5/34/.5	As Req.
16	944 473	Shim 25.5/34/1	As Req.
16	944 474	Shim 25.5/34/1	As Req.
17	847 620	Distance 3 ring	1

Ill No.	Part No.	Description	Qty
18	939 020	Disk spring B50	12
19	958 770	Dog hub	1
20	944 469	Thrust washer	2
21	827 840	Angular ring	1
22	827 860	Ring half	2
23	945 752	Lock washer	6
24	941 350	Hex screw (24NM)	2
25	941 171	Hex screw M8x10 (24NM)	2
26	841 301	Hex screw M8x65 (24NM)	2
27	552 280	Gasket ring	1
28	840 270	Magnetic plug	1
29	830 890	Gasket ring	2
30	841 781	Capstan screw M6x10	2
31	941 110	Air vent screw, plastic	1
	941 115	Air vent screw, metal	1
32	SW032	Safety wire	As Req.
33	827 830	Cover washer	1
34	LT222	Loctite 222, violet	As Req.
35	LT680	Loctite 680, green	As Req.
36	PSAS	Anti-seize	As Req.
37		BP Energrease	As Req.

"B" TYPE GEAR DRIVE WITH INTERNAL MOUNTING BOLTS

RTX

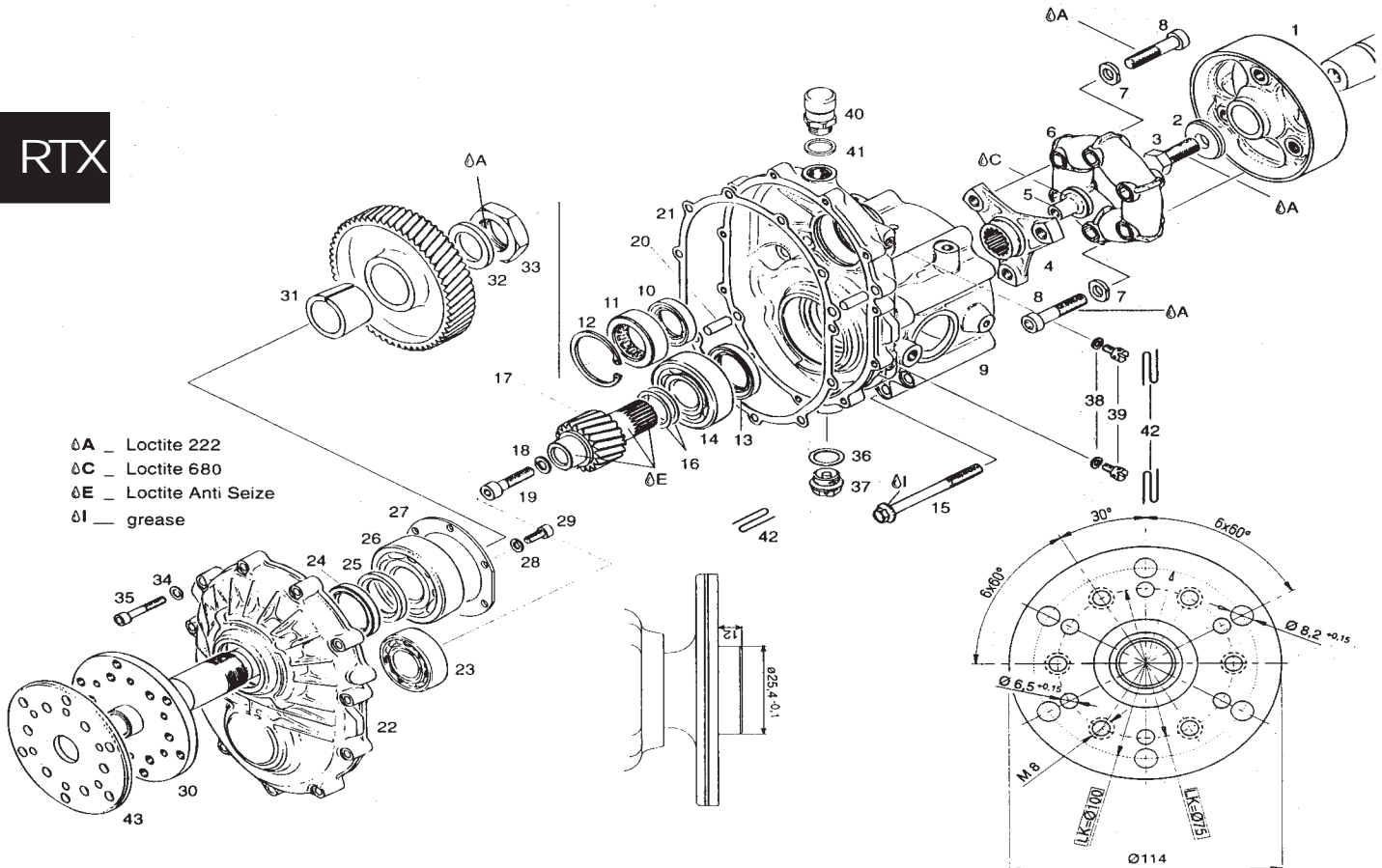


Ill No.	Part No.	Description	Qty
1	810 105	Gear housing	1
2	932 091	Ball bearing 6304 C3,20-52-15	1
3	850 430	O ring 75-2.5	1
4	841 306	Collar hex screw, M8x65, 24NM	2
5	929 670	Dowel 10x13	2
6	930 536	Gasket	1
7	886 200	Gear set, 2.58:1, 19T/49T	1
	886 202	Gear set, 2.24:1, 21T/47T	1
	886 204	Gear set, 2.00:1, 20T/40T	1
8	827 785	Washer 13/34/5	1
9	945 766	Lock washer VHV 13	1
10	941 656	Hex screw 1/2-20UNFx2, 80NM	1
11	910 372	Gear cover	1
12	850 055	Oil seal, 30x47x7/7.5	1
13	827 850	Distance ring 26/36/4.5	1
14	932 820	Ball bearing 6305C3/25-62-17	1
15	445 070	Retaining ring 62x2	1
16	837 029	Prop shaft	1
17	944 470	Shim 25.5/34/.2	As Rqd
	944 471	Shim 25.5/34/.3	As Rqd
	944 472	Shim 25.5/34/.5	As Rqd
	944 473	Shim 25.5/34/1	As Rqd
	944 474	Shim 25.5/34/1	As Rqd
18	847 620	Distance ring 25.2/33/4.5	1
19	939 020	Disk spring B50	12
20	958 770	Dog hub	
21	944 469	Thrust washer 20.5/30/.8	2

Ill No.	Part No.	Description	Qty
22	827 840	Angular ring	1
23	827 860	Ring half	2
24	945 752	Lock washer A8	6
25	941 350	Hex screw M8x125, 24NM	2
26	941 171	Hex screw M8x110, 24NM	2
27	841 301	Hex screw M8x65, 24NM	2
28	552 280	Gasket ring 18.2/24/1	1
29	840 270	Magnetic plug M18x1.5,24NM	1
30	830 890	Gasket ring 6.2/8.9/1	2
31	841 781	Capstan screw M6x10, 10NM	2
32	941 115	Air vent screw, metal	1
33	931 200	Gasket ring 18.2/22/2	1
34	SW032	Safety wire, .032 stainless	As Rqd
35	827 830	Cover washer	1

"C" TYPE GEAR DRIVE

RTX



Ill No.	Part No.	Description	Qty
1	958 980	Fly wheel	1
2	827 785	Washer 13/34/5	1
3	841 651	Hex screw 1/2-20UNF, 80NM	1
4	958 970	Coupling flange	1
5	842 660	Nut, M8	1
6	958 961	Rubber coupling	1
7	944 120	Washer	6
8	841 820	Allens screw M10x45, 40NM	6
9	810 011	Gear box housing	1
10	930 675	Oil seal 25x38x7	1
11	232 285	Roller bearing, 26.5-47-14	1
12	945 690	Retaining ring, 47x1.75	1
13	950 085M	Oil seal 32x47x7	1
14	932 820	Ball bearing 6305C3/25-62-17	1
15	440 366	Collar hex screw M8x90,24NM	8
16	427 021	Shim 26.5/34/.2	As Rqd
17	886 211	Gear set, 2.62:1, 55T/21T	1
	886 213	Gear set, 3:1, 57T,19T	1
	886 215	Gear set, 3.47:1,59T/17T	1
	886 217	Gear set, 4:1,60T,15T	1
18	845 310	Lock washer VHZ8	1
19	841 590	Allen screw M8x35, 24NM	1
20	929 940	Pin 8x20	2
21	950 211	Gasket	1
22	810 021	Gear cover	1
23	932 420	Ball bearing 6205C3,25-52-15	2
24	930 715	Oil seal, 35x47x7	1

Ill No.	Part No.	Description	Qty
25	944 110	Distance ring 31/44/4.5	1
26	932 570	Ball bearing 6306C3,30-72-19	1
27	944 106	Shim	1
28	445 330	Lock washer VHZ6	4
29	241 236	Allen screw M6x16	6
30	837 183	Prop shaft	1
31	847 755	Splitted cone sleeve, 7.5	1
32	926 200	Massive washer 30	1
33	842 575	Hex nut M30x1.5,12MM	1
		LEFT HAND!! 300NM	1
34	945 751	Lock washer A6	11
35	840 880	Allen screw M6x30	11
36	552 280	Gasket ring 18.2/24/1	1
37	840 270	Magnetic plug M18x1.5, 24NM	1
38	830 890	Gasket ring 6.2/8.9/1	2
39	841 781	Capstan screw M6x10, 10NM	2
40	941 115	Air vent screw M8x1.5, metal	1
41	931 200	Gasket ring 18.2/22/2	1
42	SW032	Safety wire, .032 stainless	As Rqd
43	944 140	Cover washer	1

FOR INSTALLATION INSTRUCTIONS SEE SERVICE BULLETIN #8UL97E

CAN BE MOUNTED ON 503'S FROM #3984708 UP AND ALL 582/618 ENGINES

